

Company _____ Telephone _____

Contact _____ Fax _____

Address _____ e-mail _____

Dimensions Operational enclosures

Console versions, please also fill out the following page - „Console attachment enclosures“.

Mounting depth

T (mm) _____ of combination of profiles (please always specify from front to rear):

Profile no. _____ + Profile no. _____ + Profile no. . _____ + Profile no. _____

Connection: ☐ fixed ☐ fixed ☐ fixed

☐ hinged ☐ hinged ☐ hinged

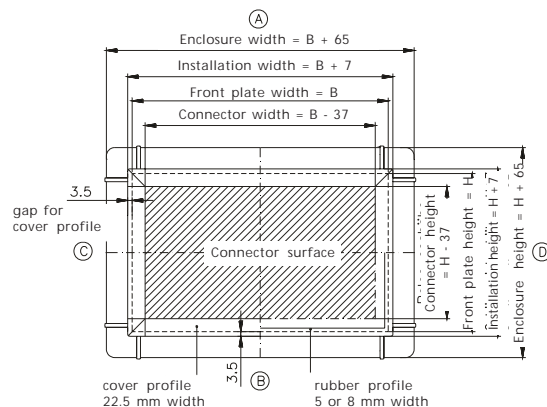
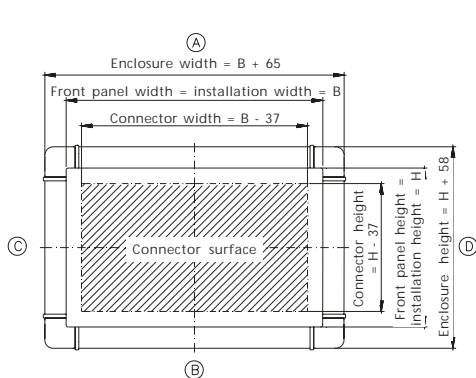
side _____ side _____ side _____

Dimensions

Please specify front panel dimensions W x H (mm) _____ x _____

and/or manufacturer/type _____

☐ Version I
Front panel without cover profile or rubber profile

☐ Version II
Front panel surrounding with cover profile or rubber profile
**Front panel**

- ☐ without front panel (direct mounting) ☐ with M4 fixing set or ☐ with M5 fixing set
- ☐ Front panel with stud bolts (flush without cover profile, dimensions, see drawing version I)
- ☐ Front panel with stud bolts (with cover profile, dimensions, see drawing version II)
- ☐ Front panel with drill holes
- ☐ Cover profile 22.5 mm (plastic black, dimensions s. version II)
- ☐ Cover profile for front panel, 5 mm rubber (Version II)
- ☐ Cover profile for front panel, 8 mm rubber (Version II)
- ☐ other front panel _____
- ☐ Finish in accordance with drawing no.: _____ (please attach)

and/or specify manufacturer/controller type: _____

☐ Separation fin quantity Position in accordance with drawing-no.: _____

Drawing no.: D-SL 3000 - _____ Bl. 1

Accessories SL 3000 for enquiry / order

Company _____

Rear wall

- with straight closure ☐ screwed ☐ hinged, hinges side _____
- with rounded closure ☐ screwed, flush ☐ with stud bolts, flush
- ☐ Modified according to drawing-no. _____ (please enclose if available)

Lock types

- ☐ Square 8 mm (Standard)
- ☐ Square 7 mm ☐ Triangular 7 mm ☐ Triangular 8 mm
- ☐ Double ward 3 mm ☐ Other _____

Colour

- Standard: ☐ Profile RAL 7035, corner pieces RAL 9006, corner caps RAL 7035 powdered or
- ☐ Natural anodized profile, corner pieces RAL 9006, corner caps RAL 9007 powdered
- ☐ Special colours (please specify RAL colour for each):

Profile RAL _____ Corner pieces RAL _____ Corner caps RAL _____

Suspension system

- ☐ GTK electronic, side _____ ☐ GT 48/2, side _____
- ☐ GT 50/2, side _____ ☐ GT 60/2, side _____ ☐ GT 80/2, side _____
- ☐ GTN II, side _____ ☐ GTK 80, side _____ (not Profile 1)
- ☐ Moterm ☐ Moterm with console
- ☐ Connection to console connector
- ☐ Connection to profile
- ☐ Other _____ Drawing-no.: _____ side _____

Total weight of fittings approx. _____ kg

for profile combination: Coupling hole on profile no. _____ or optional

specify weight distribution _____

Handle set

- ☐ Quantity _____ side _____ ☐ Special colour RAL _____

Other accessories

- ☐ Disc drive-/interface bay with flap (as for SL 2000), side _____
- ☐ Insert bay for disk drive (from 415 mm front panel height), side _____
- ☐ Insert slot for: _____ side _____
- ☐ Finish in accordance with drawing-no.: _____
- ☐ For Siemens disk drive

Other modifications/ special versions

Further modifications _____

in accordance with drawing-no.: _____

Drawing no.:

D-SL 3000 - _____ Bl. 2

stated by Rose

profile length: width _____ mm height _____ mm

Dimensions**Console attachment enclosures**

Company _____

Mounting depth

T (mm) _____ of combination of profiles (please always specify from front to rear):

Profile no. _____ + Profile no. _____

Connection: ☐ fixed ☐ hinged, page _____**Dimensions**Front panel total dimensions (dimension sheet s. operational enclosure) W x H (mm) _____ x _____ ☐ Version Iand/or manufacturer/type of controller _____ ☐ Version II**Front panel**☐ without front panel (direct mounting) ☐ with M4 fixing set or ☐ mwith M5 fixing set☐ Front panel with stud bolts (flush without cover profile, dimensions, see drawing version I)☐ Front panel with stud bolts (with cover profile, dimensions, see drawing version II)☐ Front panel with drill holes☐ Cover profile 22.5 mm (plastic black, dimensions s. version II)☐ Cover profile for front panel, 5 mm rubber (Version II)☐ Cover profile for front panel, 8 mm rubber (VersionII)☐ other front panel _____☐ Finish in accordance with drawing no.: _____ (please attach)

and/or specify manufacturer/controller type: _____

☐ Separation fin quantity Position in accordance with drawing-no.: _____**Rear wall**with straight closure ☐ screwed ☐ hinged, hinges side _____with rounded closure ☐ screwed, flush ☐ with stud bolts, flush☐ Modified according to drawing-no. _____ (please enclose if available)**Lock types**☐ square 8 mm (standard) ☐ square 7 mm ☐ double ward 3 mm☐ triangular 7 mm ☐ triangular 8 mm ☐ Other _____**Colour**Standard: ☐ Profile RAL 7035, corner pieces RAL 9006, corner caps RAL 7035 powdered or☐ Natural anodized profile, corner pieces RAL 9006, corner caps RAL 9007 powdered☐ Special colours (please specify RAL colour for each):

Profile RAL _____ Corner pieces RAL _____ Corner caps RAL _____

Console attachment set☐ Standard 30°☐ Standard 50°**Handle set**☐ Quantity _____ side _____ ☐ Special colour RAL _____**Other accessories**☐ Disc drive-/interface bay with flap (as for SL 2000), page _____☐ Insert bay for disk drive (from 415 mm front panel height), page _____☐ Insert slot for: _____ side _____☐ Finish in accordance with drawing-no.: _____☐ For Siemens disk drive**Other modifications/ special versions**

Further modifications _____

in accordance with drawing-no.: _____

Drawing no.: D-SL 3000 - _____ Bl. 3

stated by Rose profile length: width _____ mm height _____ mm