

Technical data

Commander dimensions

W x H x D

400 x 300 x 120 mm

400 x 300 x 160 mm

400 x 400 x 160 mm

500 x 300 x 200 mm

500 x 500 x 200 mm

further information – also to stainless steel
suspension systems – on request

Material Stainless steel 1.4301 / 304
optional 1.4404 / 316L

Surface grinded, grain 320

Material thickness 1.25 mm

Ingress protection door execution IP 65
screwed rear wall: IP 69

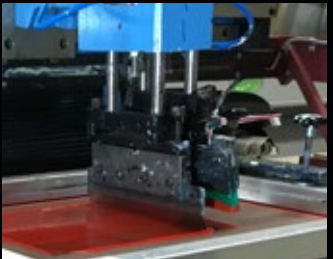
Temperature range -55 °C up to +135 °C

Machining options

- Laser machining
- Stud welding
- Projection welding
- Laser marking
- Wet painting
- Powder coating
- Screen printing
- Pad printing
- Mounting:
Assembly according to customer requirements
or electronics assembly

Please contact us, our team will assist you!

ROSE Systemtechnik GmbH
Erbeweg 13-15
D-32457 Porta Westfalica
Fon +49 571 50 41 0
E-Mail rose@rose-pw.de

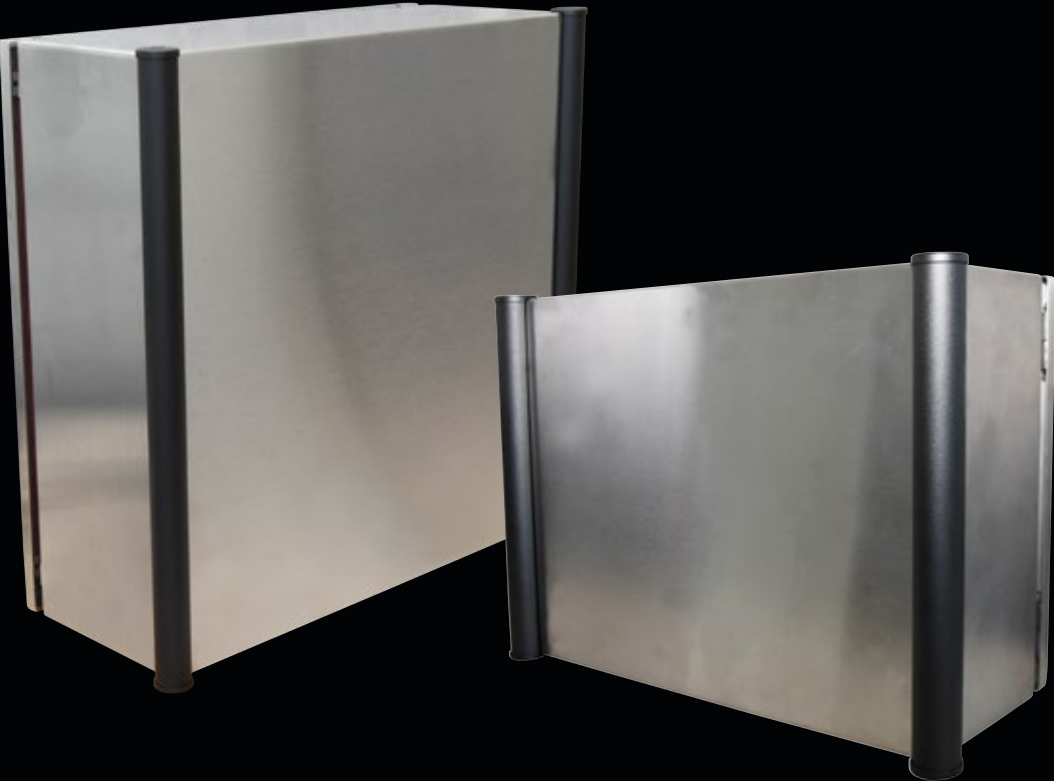


Stainless Steel Commander C 450



A Phoenix Mecano Company

The modular Commander system
for your control units



Stainless Steel Operating Systems Commander C 450

Regardless of whether your high-quality machine is used in food and beverage production, packaging technology or in general machine and plant construction - with the new stainless steel operating systems, consisting of Commander C 450 and the GTH easy suspension system ROSE offers you the perfect solution for your requirements.



Your advantages:

- High-quality stainless steel control enclosure with handle variations
- Finish optionally in stainless steel 1.4301 (304) or 1.4404 (316L)
- Stable construction - finishing grain 320
- 3 depth versions: 120 mm, 160 mm, 200 mm
- 2 width versions: 400 mm und 500 mm
- 3 height versions: 300 mm, 400 mm und 500 mm



with 2 edge handles side C/D



with 2 bow-type handles side C/D



with 1 bow-type handle side A

Modular design

- 2 Handle design variations - can be positioned on all sides
- Rear side with door, optionally screwed rear panel for high degree of protection IP69
- Door swivelling range > 100°
- Locking systems in plastic or stainless steel
- Quick individual machining service thanks to ROSE Quick Line System
- Internal sealing system (silicone seal), optional EMC version

