



**ROSE**

A Phoenix Mecano Company



**HMI SOLUTIONS**  
New products

## CS-Line | Panel PC in hygienic design

---

### Stainless steel Panel PC for hygienic environments

The stainless steel Panel series is primarily designed for the food, pharmaceutical and packaging industries. The Panel PCs meet the hygiene, robustness and reliability requirements demanded by these specific sectors.

- Hygienic design
- Stainless steel Panel PC or monitor
- Display diagonal 15.6" / 18.5" / 21.5" / 23.8"
- Developed according to DIN EN 1672-2
- Design inspired by EN ISO 14159 and EHEDG
- High degree of customization options
- Individual integration of e.g. buttons, RFID, logo through partial front
- Optional laser marking
- FDA-compliant seals
- Ingress protection IP65 / IP69



## GT-HD | New hygienic support arm

---

### Certified stainless steel support arm for hygienic areas

The GT-HD stainless steel support arm from Rose Systemtechnik with a Ø48 mm round tube is specially designed to meet the requirements of hygienic areas. It has FDA-compliant seals and DGUV-certified swivel joints.



- + Hygienic support arm system with Ø48 mm tube
- + DGUV-certified swivel joints
- + Developed according to DIN EN 1672-2
- + Design inspired by EN ISO 14159 and EHEDG
- + FDA-compliant seals
- + Ingress protection IP65 / IP69
- + Temperature range -10 °C to +110 °C

## DLS 4.0 | Digital Label System

---

### Smart, energy-saving solution for flexible button labelling

The DLS 4.0 is a further development of the successful DLS system and enables even more flexible, user-specific and interchangeable re-labelling of the buttons during operation.

- + Reduction of switching times from 12 to 1 second
- + Function and language switching possible
- + Multiple button assignment

- + Reduction of existing control elements
- + Possible display sizes 1.54"; 2.13"; 2.66"; 2.9"; 4.2"



## DLS Basic | Cost-effective and innovative

---

### Cost-effective and innovative key labelling

DLS Basic offers a cost-effective alternative to ROSE DLS 4.0 and is more innovative than conventional labelling options.



- + Cost-effective alternative to the existing ePaper solution
- + Innovative alternative to conventional labelling options
- + Can be retrofitted to almost all commanders, Panel PCs and control cabinets
- + Display size 1.54"
- + Switching time 1 second
- + Available from stock

## New Control Enclosure | Rounded corners, modern look

---

### New standards in Control Enclosures

Our new Control Enclosure with its rounded corners sets new standards in control enclosures with its modern look and flexible features.



- + Modern design with rounded corners
- + Ingress protection IP65
- + Suitable for Siemens SINUMERIK One and many other front-mounted devices
- + Sufficient space for a wide variety of components with an installation depth of 130 mm
- + Standard sizes available from stock soon
- + High degree of customisation possible

## Panel PC | Customised solutions

---

### Customised Panel PC with cover glass according to customer requirements

Our customised Panel PCs demonstrate how customisation and ergonomic design can be perfectly combined.

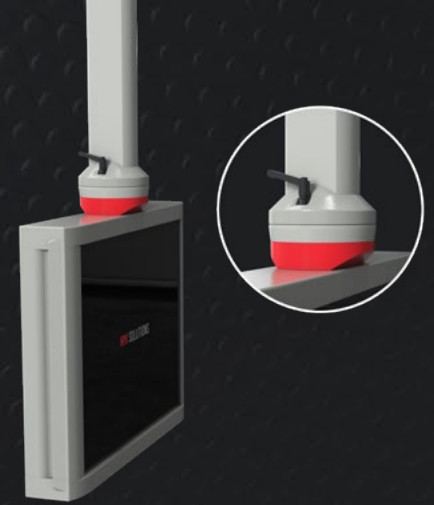


- + Customised Panel PC with 21.5" display diagonal
- + Cover glass designed according to customer requirements
- + Processor: ARM board
- + With electronic button labelling DLS
- + Includes signal light and ergonomic handle
- + Device pre-wired and ready for connection
- + Internal cable routing and connection to support arm system via the Flat Panel Adapter (rear wall)
- + Protection class IP54

## GTV light - new load range

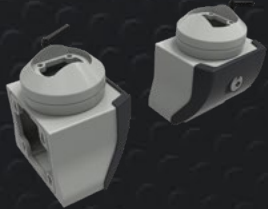
---

- + Ergonomic workplace design
- + Load range 25-34 kg added
- + Protection class IP54
- + Can be integrated into existing GTN II systems



## New Flat Panel Adapter

---



- + New body made of die-cast aluminium
- + For VESA 100 connection or individual hole patterns
- + High degree of customisation through mechanical processing and colouring
- + Protection class IP54

## Adapter plate GTN II

---

- + New adapter plate for GTN II coupling
- + Connection to narrow control enclosure
- + Connection pattern 120x65 mm

# > HMI SOLUTIONS | New products

by Rose Systemtechnik



A Phoenix Mecano Company



**Lennart Finke**

Sales HMI

✉ [lennart.finke@rose-pw.de](mailto:lennart.finke@rose-pw.de)

☎ +49 173 294 400 5

☎ +49 571 5041 134



**Patrick Bartsch**

Inside Sales Specialist HMI

✉ [patrick.bartsch@rose-pw.de](mailto:patrick.bartsch@rose-pw.de)

☎ +49 171 3377 971

☎ +49 571 5041 151



**Rose Systemtechnik GmbH**

Erbeweg 13-15

D-32457 Porta Westfalica

✉ [hmi@rose-pw.de](mailto:hmi@rose-pw.de)

🌐 [www.rose-systemtechnik.com](http://www.rose-systemtechnik.com)

☎ +49 571 5041 0

82100

© Rose Systemtechnik 11/2025

**HMI SOLUTIONS**